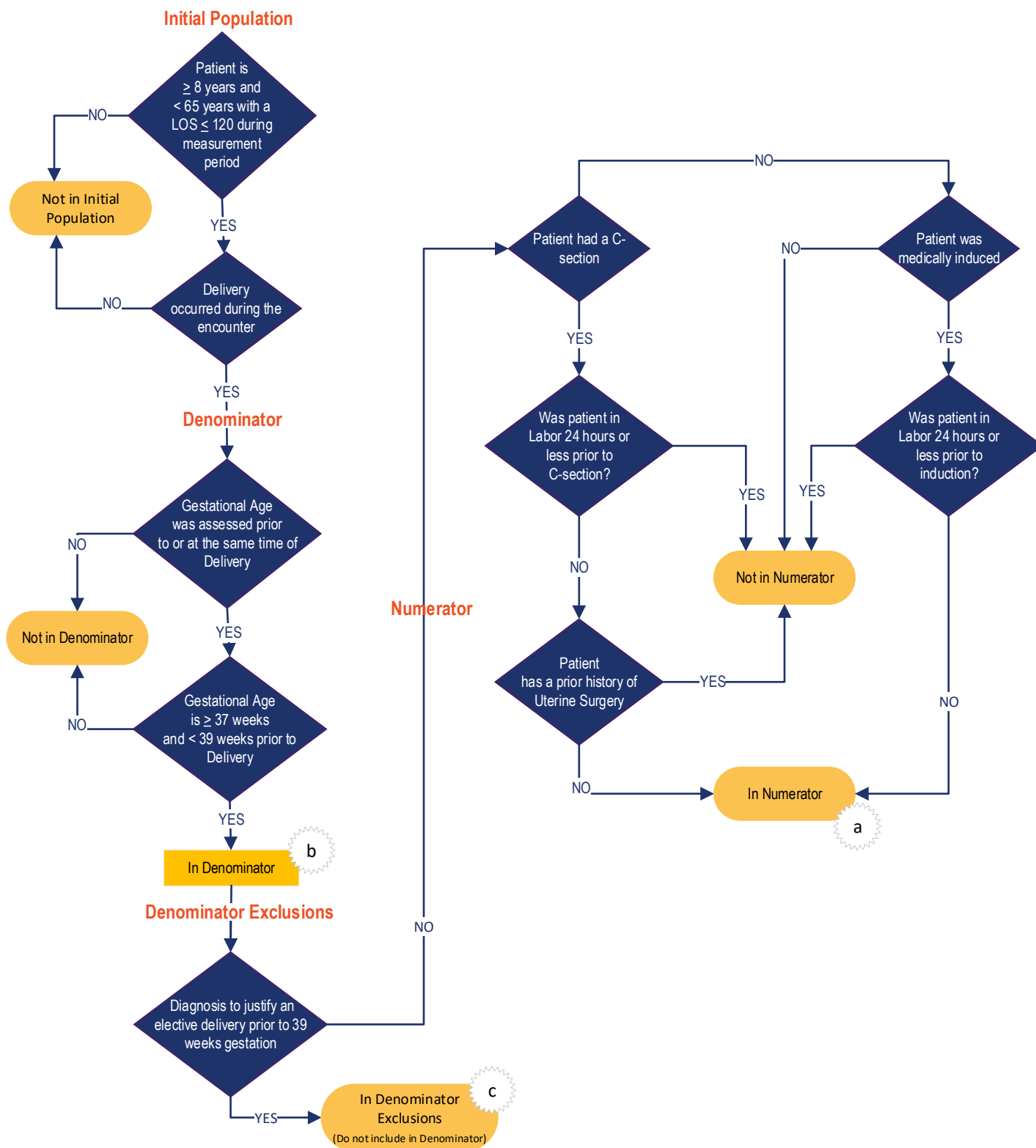


Elective Delivery

Patients with elective vaginal deliveries or elective cesarean births at ≥ 37 and < 39 weeks of gestation completed



Sample Calculation

Performance Rate = $\frac{\text{Numerator (a=8 patients)}}{\text{Denominator (b=100 patients) - Denominator Exclusions (c=10 patients)}} = 8\%$