

Elevating Your Sustainability & Decarbonization Efforts

November 6, 2023



Today's Agenda

- Introduction
- Purpose of Sustainable Healthcare Certification Program
- Video
- Value & Benefits of Certification
- Certification Requirements
- Resource Center Overview
- Overview of Review Process
- Wrap-Up & Q&A

Poll Question #1

Purpose of Sustainable Healthcare Certification

Kathryn Petrovic, MSN, RN

Director, Department of Standards & Survey Methods
The Joint Commission



Why Important?

Healthcare sector is contributing disproportionately to climate change

Environment impacts our health contributing to chronic diseases and acute illnesses

Shared mission toward doing good for all people



Sustainable Healthcare Certification (SHC)

Hospitals/Critical Access Hospitals (HAP/CAH)

- **Voluntary program** awarded for 2 years
- Available to TJC-accredited and non-TJC-accredited
- Awarded at the **organization level**
- As a nationally-recognized standards developer, requested by healthcare organizations
- **Provides a framework** to expand or continue organization's decarbonization efforts
- **Provides public recognition** of an organization's commitment and achievements in contributing to environmental sustainability
- Live **January 1, 2024!**



Video

Program Benefits

Chad Larson, MBA

Executive Director, Hospital Accreditation & Certification Programs

The Joint Commission



Why Sustainable Healthcare Certification?

- To evaluate and recognize hospitals that have established a robust set of structures and processes and have made decreasing their carbon footprint a strategic priority.
 - Certification is a symbol of pride to share with their staff, leadership, patients, and community.
- To provide a road map that others can follow to advance sustainability practices.
 - Some may not be able to meet all requirements to be certified.
 - However, with the standards as goals and the resources as tools, they can slow and steadily move forward on this journey.

Sustainability Program Outcomes

- CommonSpirit Health's sustainability program has yielded tangible cost savings:
 - Installation of LED lighting in 28 hospitals reduced greenhouse gas emissions and energy usage, saving \$10 million a year
 - Retro-commissioning infrastructure and HVAC systems, resulted in 5-12% savings on energy use
- CBEC data from Health Care Without Harm's Energy and Health Impact Calculator showed a 30% cut in healthcare electricity's carbon pollution by 2030 would reduce greenhouse gas emissions that could result in preventing:
 - 4,130 premature deaths
 - 85,000 asthma attacks
 - 4 million respiratory symptom events
 - 3,750 hospital visit incidents
 - Save approximately \$1.2 billion in medical costs
- A strong sustainability record delivers a competitive advantage in staff recruitment and retention:
 - Nearly half of 18-34-year-olds say they would look for a new role if they thought their employer was not committed to improving environmental sustainability (Robert Half, 2022)

Poll Question #2

Program Benefits

Environmental impact

- Certification encourages hospitals to focus on reducing their environmental impact by implementing energy-efficient practices, reducing waste and emissions.
- Achieving sustainability goals can contribute to the broader efforts of environmental conservation and preservation.

Improved health outcomes

- Sustainable practices in hospitals can lead to improved health outcomes for patients, staff, and the community.
- Reducing chemical exposures, improving air quality, and implementing infection control measures creates healthier environments that promote healing and prevent the transmission of diseases.

Program Benefits

Reputation in the community

- Achieving sustainability certification demonstrates a commitment towards responsible and ethical practices.
- Attract patients, employees, and stakeholders who prioritize sustainable healthcare options.
- Community engagement may foster partnerships and collaborations that address broader public health and environmental challenges.
- Improved health outcomes – Air quality improvements and practices create a healthier environment.

Regulatory compliance

- Achieving and maintaining certification may provide opportunity to ensure legal and regulatory obligations are met.
- Sustainability practices can help mitigate environmental, societal, and financial risks.
- Help ensure hospitals are prepared to adapt to changing regulatory landscapes and potential disruptions.

Cost savings

- Implementing energy-efficient technologies and optimizing waste management strategies can aid operational efficiencies resulting in cost reductions.
- Hospitals may qualify for tax incentives to finance climate resiliency and renewable energy infrastructure projects (i.e. Inflation Reduction Act).
- Cost savings can be redirected to patient care, infrastructure improvements, research, and other critical areas.

Program Requirements

Phavinee Thongkhong Park, RN, PhD.

Associate Director, Standards & Survey Methods

The Joint Commission



Sustainable Healthcare Certification (SHC) Standards and EPs

Sustainable Healthcare Certification (SHC) Program aims to advance decarbonization in healthcare.

Standards

Leadership (SHCLD.01), (SHCLD.02)

Measurement (SHCME.01)

Performance Improvement (SHCPI.01)

SHC LD Standards and EPs

SHCLD01. Environmental sustainability is a strategic priority for the organization.

- Written strategic plan
- Allocation of resources

SHCLD.02 The organization defines leadership responsibilities.

- Appoints a leader(s) for oversight of activities
- Develops and implements operational plans



Sources of greenhouses gases

- *Energy use*
- *Purchased electricity*
- *Anesthetic gas use*
- *Pressurized metered-dose inhaler use*
- *Fleet vehicle carbon-based fuel use*
- *Waste disposal*



SHC ME Standard and EPs

SHCME.01 The organization measures its greenhouse gas emissions.

- Measures three or more of the following:
 - Energy use (fuel combustion)
 - Purchased electricity (purchased grid electricity, district steam, chilled and hot water)
 - Anesthetic gas use, including volatile agents and nitrous oxide
 - Pressurized metered-dose inhaler use
 - Fleet vehicle carbon-based fuel use (from organization owned vehicles)
 - Waste disposal
- Converts greenhouse gas measurements to metric tons of carbon dioxide equivalents (MTCO₂e).

SHC PI Standard and EPs

SHCPI.01 The organization improves its environmental footprint by reducing its greenhouse gas emissions.

- Develop goals and implement action plans.
- Goals stated in percent reduction in MTCO₂e.
- Analyze greenhouse gas emissions data annually.
- Determine goal(s) are met and revises its plan.



Resource Center

Brette Tschurtz, MPH

Associate Director, Department of Research

The Joint Commission



Sustainable Healthcare Resource Center

Hospitals consume energy and use materials that contribute to increased waste and greenhouse gas emissions. Estimates suggest that the healthcare industry accounts for approximately 8.5 percent of national carbon emissions. It is important that health care does its part to help improve its environmental footprint.



Sustainable Healthcare Resource Center



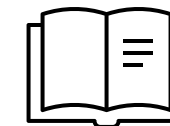
About the Resource Center

Reducing greenhouse gas emissions while caring for patients doesn't have to be difficult – and can lead to significant returns on investment. The Joint Commission recognizes those organizations committed to reducing their carbon footprint through our Sustainable Healthcare Certification program. But no matter where you are in your environmental sustainability journey, this page offers best practices, tools, and resources across several domains.

For organizations just beginning their environmental sustainability journey, this resource center provides an on-ramp toward sustained decarbonization. And for those organizations that are well on their way, these resources offer innovative approaches and a chance to highlight your own strategies.

SHC Resource Center Features

- **Strategies, tools and tips:** Find valuable guidance and actionable strategies to help guide your environmental journey
- **Spotlights:** Learn directly from leading organizations that embrace environmental sustainability, provides real world examples
- **Cost savings and ROI:** Highlights realized cost savings and returns on investment from organizations that have built a strong sustainability program
- **Key Resources:** Helpful literature, guidance documents, websites, tools, calculators produced by some of the most trusted names in healthcare environmental sustainability



Important Components for Building an Environmental Sustainability Program

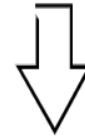
We know there is a lot of information to assist organizations on their environmental sustainability journey. We have curated and distilled many of these resources, strategies tools and best practices around an easy-to-use and accessible framework. This collection has basic information on how to get started, as well as innovation solutions for those for organizations that have already taken steps to improve their environmental footprint.



Leadership and Oversight



Assessment, Measurement &
Improvement



Greenhouse Gas Reduction Strategies

Leadership – Strategies and Practices

Getting Started

- ✓ Identify a champion and/or key stakeholders
- ✓ Appoint a leader who is responsible for activities to reduce greenhouse gas emissions
- ✓ Start small and build momentum – don't try to boil the ocean
- ✓ Build a “green team” or green committee that includes clinicians
- ✓ Set a clear vision with defined targets/goals
- ✓ Build sustainability projects with a clear business case; incorporate ES into existing service lines
- ✓ Incorporate environmental sustainability into strategic planning

Long Term Strategies

- ✓ Allocate resources (financial and human) for a long term strategy
- ✓ Develop policies that support decarbonization actions and interventions
- ✓ Foster a culture of sustainability; walk the talk, lead by example
- ✓ Collaborate and partner with external stakeholders (the community, suppliers, area hospitals)
- ✓ Incentivize staff efforts (remote work policies, subsidizing public transportation)



Key Resources

Cost Savings (coming soon)

Spotlights (coming soon)

Search for leadership and oversight resources



Results 1-10 of 14

RESOURCE

Reducing Healthcare Carbon Emissions: A Primer on Measure and Actions for Healthcare Organizations to Mitigate Climate Change

This primer serves as a starting point for a more comprehensive climate mitigation strategy that will require integrating environmental impacts into the definition of health care value, shifting to a circular economy, and expanding preventive models of care. (Source: Agency for Healthcare Research and Quality)

RESOURCE

Proven Practices for Sustainability Governance in Health Care: Structure and Staffing

This guide describes how leaders can design organizational structures, processes and governance for sustainability into existing organization imperatives. This resource includes several concrete examples of governance and staffing structures that present more of the "how" for its audience. (Source: Practice Greenhealth)

RESOURCE

Practice Greenhealth Health Care Emissions Impact Calculator

The Health Care Emissions Impact Calculator is an accounting tool specifically designed to help health care organizations measure their greenhouse gas (GHG) emissions. The calculator can be used to develop a GHG inventory at the facility and/or system level for all Scope 1, 2, and 3 emissions (can access calculator after filling out a form). (Source: Practice Greenhealth)

Important Components for Building an Environmental Sustainability Program

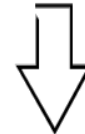
We know there is a lot of information to assist organizations on their environmental sustainability journey. We have curated and distilled many of these resources, strategies tools and best practices around an easy-to-use and accessible framework. This collection has basic information on how to get started, as well as innovation solutions for those for organizations that have already taken steps to improve their environmental footprint.



Leadership and Oversight



Assessment, Measurement &
Improvement



Greenhouse Gas Reduction Strategies



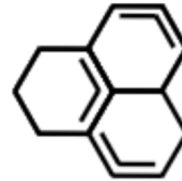
GHG reduction strategies by domain



Transportation



Buildings & Energy Use



Anesthetic Gases



Waste

Please visit... additional info coming soon!!

Access the resource center:

<https://www.jointcommission.org/our-priorities/sustainable-healthcare/sustainable-healthcare-resource-center/>

Stay tuned, coming soon...

- Spotlights – strategies and innovation from leading organizations
- Real-world cost savings examples

Please contact Brette Tschurtz at btschurtz@jointcommission.org if you'd like to have your organization's environmental sustainability initiatives featured on our Resource Center

Sustainable Healthcare Certification: Review Process

Tim Markijohn, MBA\MHA, CHFM, CHE

Field Director

Division of Accreditation & Certification Operations

The Joint Commission



Review Key Points

- Conducted completely offsite via Microsoft Teams
- One day Review by SHC experts
- Evaluating one HCO per review, not system level
- All documentation reviewed during the event, no documentation upload prior to review

Pre-Review

- Review SHC standards and the Review Process Guide
- Utilize your Account Executive for any questions or concerns
- Notification 30 days in advance of initial Review, 7 business days for recertification
- Internet connection and hardware confirmation

Opening Conference

- Include SHC leadership and other staff at discretion of organization
- Introductions
- Joint Commission and Certification overview
- Agenda review

Planning Session

- Organizational Structure
- Written Strategic Plan
- Review baseline data for three emission sources (initial review)
- Review 24 months of data (recertification review)

Organizational Environmental Sustainability Program

- Organization's decarbonization journey
- Key structures and processes to improve energy efficiency, decrease waste, and decreasing carbon footprint
- Coordination activities
- Operational plan development and implementation
- Decarbonization goals

Measurement of Greenhouse Gases

- Greenhouse gas sources being measured (at least 3)
- Data gathering approach (centralized or decentralized)
- Activity data collection and emissions factors
- Application of calculation tools
- Converting activity data into MTCO₂e

Performance Improvement

- Approach to PI
- Data collection process
- Data quality
- Annual assessment of data to determine actions meet goals
- Revision of plan if goals are not achieved or maintained
- Reporting to leadership

Summary Discussion

- Small group of SHC key staff
- Opportunity to review any IOUs and any unresolved issues
- Review identified Requirements for Improvement (RFI)
- Determine if RFIs will be discussed in detail at Exit Conference

Exit Conference

- Include SHC leaders and other staff at discretion of organization
- Review RFIs if determined during Summary Discussion
- Identified Best Practices
- Post-review process

Keys to a Successful Review

- Ensure there are skilled individuals to review the Electronic documents since there is no uploading
- Power Points Presentations for Opening
- Internet connection and hardware confirmation
- Determine what your program would like to accomplish during review and share with reviewer
- Ask Questions
- RELAX and BREATHE

Next Steps

Steps to Becoming Certified



Contact The Joint Commission

- Email certification@jointcommission.org
- [Review program requirements](#)
- Work with dedicated Joint Commission staff to help prepare for review



Preparation

- Assess compliance and potential gaps to program requirements
- Review readiness [resources](#)
- Prepare for offsite/virtual review using Review Process Guide
- Determine ready date for certification review
- Complete a [pre-application](#) to become certified



Virtual Review

- 30 days advance notice
- Review strategic plan, decarbonization journey, structures and processes to decrease carbon footprint
- Review greenhouse gas emissions data measured, data collection process, annual data assessment, revision of plan if goal not met/sustained

Pre-Application



Pre-Application for Sustainable Healthcare Certification

The Sustainable Healthcare certification officially goes live on January 1st, 2024, meaning the official application and onsite reviews will be available at that time.

This pre-application is an abbreviated questionnaire that can be submitted before January 1st, which allows an organization to identify a ready date for their initial onsite review and enter the scheduling queue. This is ideal for organizations that hope to be reviewed during the first few months after launch. The earlier you submit the pre-application, the earlier we begin the process of scheduling the review according to your ready date.

Once the formal application opens on January 1st, 2024, we will contact you to complete the entire application. In the

* FIRST NAME:

* LAST NAME:

* TITLE:

* WORK PHONE NUMBER

* WORK EMAIL ADDRESS:

We cannot accept personal email accounts.

ORGANIZATION INFO

* ORGANIZATION:

Thank You