

Your Guide to Choosing an Accreditor for Your Home Care Organization

HOW DOES THE JOINT COMMISSION STAND OUT FROM THE CROWD?

Recognitions



Gain access to programs & network participation with State and Payor Recognition. Currently we are recognized in lieu of licensure in the state of California and by Blue Shield California for the Community-Based Palliative Care certification.

Most Recognized Standards



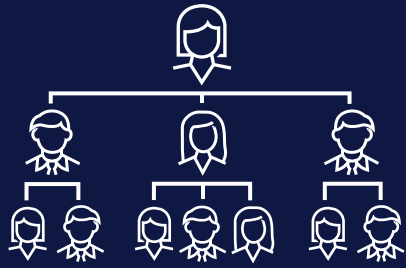
Developed with input from your industry peers and nationally recognized experts, our standards are considered the industry benchmark for quality and safety.

High Touch



For every phase of your accreditation journey, from getting started to maintaining your achievement, we have responsive staff ready to assist.

Organization-Wide Approach



By looking at the home care agency, we can help you minimize risk areas and instill a data-driven culture of excellence in everything you do.

Recognition for a Variety of Settings and Services



In addition to serving a wide variety of home based services (Home Health, Hospice, Pharmacy, DMEPOS and Personal Care), The Joint Commission offers deemed status survey for Medicare Certification and Specialty Certification for Community-Based Palliative Care

Tracer-Guided Survey Experience



Our unique patient tracer method uses observation and interviews to “trace” an individual’s interaction with your organization, reducing paper submissions while getting a real-time analysis of your organization’s strengths and challenges.

Employed Surveyor Team



The Joint Commission’s surveyor cadre is experienced. Each surveyor sees an average of 30 organizations per year, allowing them to bring more field-tested leading practices to you.

What Our Customers Say

Results of 2017 Customer Loyalty Survey from CEOs of Joint Commission accredited home care organizations.



94.9%

Rated positively the benefit of accreditation as external validation of organization performance*



96.6%

Rated positively their likelihood to reapply for accreditation*



96.2%

Rated the educational value of their accreditation survey positively*



95.7%

Rated positively the impact of accreditation on ability to provide safe, high quality care*



96.6%

Rated positively the customer service and support received from Joint Commission staff*

*Rating of 7 or higher on a 0-10 scale