



# COMPREHENSIVE CARDIAC CENTER CERTIFICATION

**Kathleen Mika, MSN, RN**


Associate Director

Department of Standards and Survey Methods

Division of Healthcare Quality Evaluation



# Objectives:

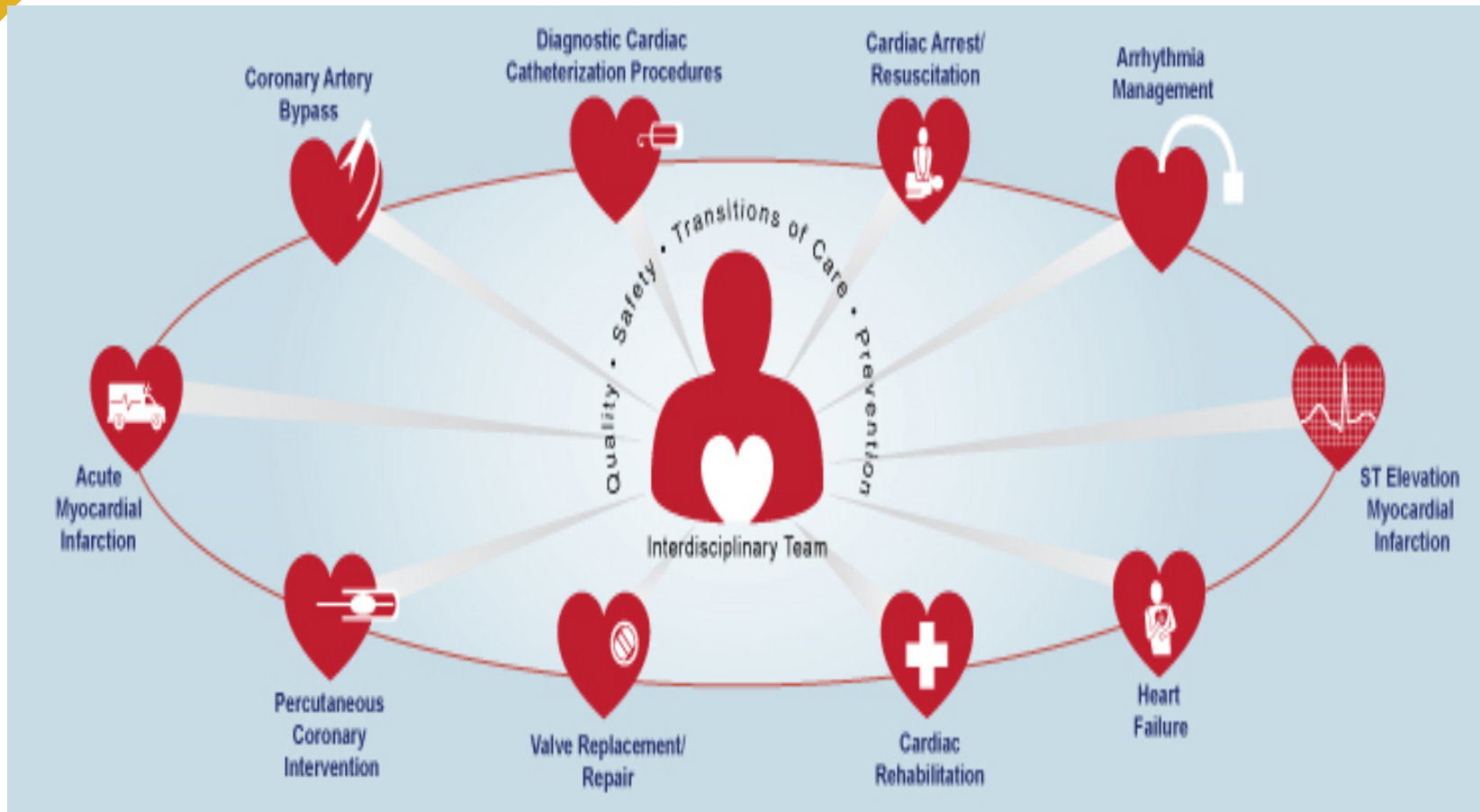
- 
- ▶ At the conclusion of this presentation, the participant will be able to:
    1. Become familiar with the development and structure of the Comprehensive Cardiac Center certification program
    2. Understand the eligibility criteria for the program
    3. Be familiar with key standards and survey methods

# New certification program



- ▶ The Joint Commission Comprehensive Cardiac Center Certification program is a new program beginning in 2017.
- ▶ A “service line” certification

# Comprehensive Cardiac Center Certification



# New certification program

- ▶ This program has been developed to recognize Joint Commission–accredited hospitals that demonstrate excellence in delivering comprehensive cardiac care through a combination of standards compliance, clinical performance on targeted metrics, and achievement and/or maintenance of required Advanced Disease-Specific Care requirements

# Program development

- ▶ Program development began in 2013
- ▶ Prepublication standards were posted November 21, 2016 with December Perspectives article
- ▶ Developed with technical advisory panel of experts
- ▶ Stand alone E-dition manual (similar to PNC and Palliative Care)

# Eligibility Criteria - General

- ▶ Owned/Operated in United States
- ▶ Hospital is accredited by TJC
- ▶ Fits “types of services certified”  
(provides patient care/interaction)
- ▶ Served a minimum of 10 patients at  
time of application
- ▶ Uses Clinical Practice Guidelines
- ▶ Uses Performance Measures

# Eligibility Criteria - CCC

- ▶ The center's scope of care, treatment, and services includes, at a minimum, the following (7) domains:

- Management of ischemic heart disease, including medical and interventional/surgical management--management of acute coronary syndrome (STEMI and NSTEMI), PCI, and CABG






# Eligibility Criteria - CCC

- Management of cardiac valve disease, including valve replacement/repair procedures
- Management of arrhythmias, including electrophysiology services and outpatient device clinics
- Advanced heart failure management, including OP services

# Eligibility Criteria - CCC



- Management of cardiac arrest, including prevention of in-hospital arrests, resuscitation, and targeted temperature management for cardiac arrest

- Cardiac rehabilitation of patients, as indicated, either on site or by referral

- CV risk factor identification and cardiac disease prevention

# Eligibility Criteria - CCC

- The comprehensive cardiac center utilizes a nationally audited registry or similar data collection tool to monitor the data and measure outcomes for, at minimum, the following conditions/procedures:
  - Acute myocardial infarction
  - Coronary artery bypass surgery

# Eligibility Criteria - CCC

- Diagnostic cardiac catheterization procedures
- Implantable cardioverter defibrillator (ICD) procedures
- Percutaneous coronary interventions
- Valve replacement/repair procedures

# Eligibility Criteria – E-app

- Completion of the E-application will assist with the determination of eligibility
- Work with your account executive

# Program Structure

- Follows health care services format (similar to Perinatal Care and Palliative Care)
  - **CCCM**--Management
  - **CCCPC**--Provision of Care, Treatment and Services
  - **CCCIM**--Information Management
  - **CCCPI**--Performance Measurement

# CCC Certification Measures

## ■ **Nine** domains of non-standardized measures for CMIP:

- AMI
- CABG
- Diagnostic cardiac catheterization procedures
- ICD procedures
- PCI
- Valve replacement/repair
- STEMI
- Heart Failure
- Cardiac rehabilitation

# CCC Certification Survey Process



- ▶ 2 reviewers for 2 days
  
- ▶ May require extra day if distant OP sites



# For more information on CCC Certification

- ▶ Go to the Comprehensive Cardiac Center Certification program website:

[https://www.jointcommission.org/certification/comprehensive\\_cardiac\\_center\\_certification.aspx](https://www.jointcommission.org/certification/comprehensive_cardiac_center_certification.aspx)

# For more information on CCC Certification

- ▶ Email for specific questions/ clarifications on the program:

[CCCCertification@jointcommission.org](mailto:CCCCertification@jointcommission.org)

# Don't miss our upcoming Cardiac Care Certification Conference

- ▶ March 24, 2017
- ▶ Rosemont, IL
- ▶ <http://www.jcrinc.com/cardiac-care-certification-conference-march-24-2017/>

# The Joint Commission Disclaimer

- ▶ These slides are current as of 01/17/2017. The Joint Commission reserves the right to change the content of the information, as appropriate.
- ▶ These slides are only meant to be cue points, which were expounded upon verbally by the original presenter and are not meant to be comprehensive statements of standards interpretation or represent all the content of the presentation. Thus, care should be exercised in interpreting Joint Commission requirements based solely on the content of these slides.
- ▶ These slides are copyrighted and may not be further used, shared or distributed without permission of The Joint Commission.
- ▶ Distribution of the speaker's presentation other than in PDF format is expressly prohibited.

# Questions?

